

TCM Fall 2024 Orchestra Auditions

Youth Orchestra-Violin

Registration Paperwork Deadline:

Students not taking private lessons at TCM will need to register at the following link:

https://temeculaconservatory.na4.documents.adobe.com/public/esignWidget?wid=CBFCIBAA3AAABLblqZhC4X6IM-2yg_R4pg0rD9baafoW-ZKchred0_0RCmfg8QoBTydBI0IP1tFpjYQ7D0-A*

Audition paperwork is due by Friday, August 23rd, Midnight

Auditions start at 9:30am, Saturday, August 24th.

Please arrive at the rehearsal center (suite 300) at 9am for tuning and warm up.

(TCM Address: 28910 Rancho California Rd., Suite 102 & 300, Temecula, Ca. 92590)

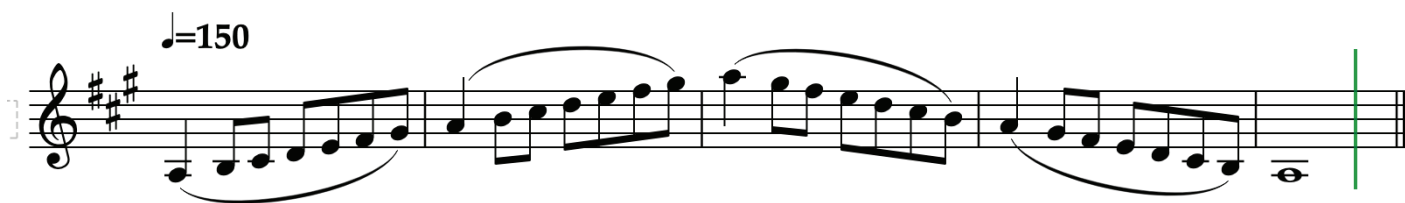
Audition Requirements:

1. Play the following 2 Octave scale at the specified tempo: ♩=150

2. Play the excerpt at the following tempo: ♩=124

***Students playing the required scale and excerpt slower than the required speed will receive an automatic 5 points off their overall score of 0-100 points.**

A Major Scale (Two Octaves)



*** If you have any questions please first view the Frequently Asked Questions pages in this packet or go to our FAQ page on our Auditions Page on our Website. If you can't find the answer to your question at that point please email**

Lindsey Bohn at lindsey@temeculaconservatory.com or call her at 951-501-4231.

Excerpt-Musette

Tempo ♩=124

With both repeats

Musette
ミュゼット

J. S. Bach
バッハ

Andante pastorale

The image shows a musical score for the piece 'Musette' by J.S. Bach. It consists of four staves of music. The first staff starts with a treble clef, a key signature of one sharp (F#), and a common time signature. The tempo is 'Andante pastorale'. The first staff begins with a dynamic of *mf* and ends with a dynamic of *p*. The second staff starts with a dynamic of *f* and ends with a dynamic of *p dim.*. The third staff starts with a dynamic of *mf* and includes a *cresc.* marking. The fourth staff starts with a dynamic of *mf* and ends with a dynamic of *p dim.*. The piece concludes with the word 'Musette' written three times: 'Musette', 'Musette', and 'Museta'. The score includes various musical notations such as notes, rests, slurs, and fingering numbers (0-4). There are also repeat signs and breath marks (V) throughout the piece.

mf *p*

5 *f* *p dim.*

8 *mf* *cresc.*

12 *mf* *p* *dim.*

Musette Musette Museta

Hello Inland Valley!

TCM orchestras are open to the surrounding community! This means a student is not required to be a private student at TCM in order to take part in one of its three orchestras; Junior Orchestra, Youth Orchestra and Chamber Orchestra! Below are the audition requirements.

Audition Location

Auditions are being held at the TCM studio at 28910 Rancho California Rd, Suite 102 & 300 in Temecula. We will be opening our orchestra rehearsal center (Suite 300) before each rehearsal for students to warm up where they will be tuned and receive their audition number. Auditions are blind, meaning the judges will sit behind a black curtain and will only be able to hear each student as they audition. We will be holding three separate, consecutive auditions, each one for each of our orchestras.

Current TCM Orchestra Students

Students who have already auditioned for and been accepted into a TCM orchestra who plan on staying in the orchestra they have been accepted into will not be required to re-audition. Instead this audition for them will be a chair test to determine section and seating order.

Current TCM Studio Lesson Students

TCM students who take private lessons from the TCM studio and are currently in Junior Orchestra or Youth Orchestra who would like to audition for the next level of orchestra may do so with the following requirements:

Students in Junior Orchestra auditioning for Youth Orchestra must have already passed off book 1 of the Suzuki books by the day auditions are held.

Students in Youth Orchestra auditioning for Chamber Orchestra must have already passed off Suzuki books 1 thru 4 by the day auditions are held.

Non-TCM, First Time Auditionees

It is recommended that teachers outside of TCM who are auditioning their students review the required audition materials with their students to help them determine their expertise level. Students auditioning for Youth Orchestra must be at a Suzuki book 2 level or above. Students auditioning for Chamber Orchestra must be at a Suzuki book 5 level or above. In the end, all students will be placed in an orchestra that fits their level of playing.

The Audition Process

30 Minutes Before Audition Start Time

Auditionees arrive and enter Suite 300 where their instrument will be tuned and where they will pick a number out of a basket giving them their order in the audition.

Auditions begin. Students 1 thru 5 will be guided over to the studio where student 1 will head over to the audition room and begin their audition. Student 2 will be "on deck" in a practice room preparing and students 3-5 will wait in the waiting room. Students from the orchestra room will be brought over as each auditionee finishes their audition until all students have auditioned.

The judges will speak to with each student and guide them through their audition instructing them on which piece to play as well as giving them a starting tempo. Students should not talk during their audition. If a student has a question they will be required to leave the audition room to speak with audition staff who will be right outside the door. The audition staff will interact with the judges on behalf of the student to clear up any questions they might have. For further details on how auditions are conducted please refer to our Frequently Asked Questions page.

Once a student is finished playing their audition the audition staff will open the door for them and they will step out of the audition room and return to Suite 300 where they will put away their case. **They are not allowed to speak to other students (those who have not yet auditioned) about their audition material** They are free to return home at that point.

Audition Schedule

Junior Orchestra Auditions

7:30 Junior Orchestra auditionees arrive and enter Suite 300.
8:00 Auditions begin.

Youth Orchestra Auditions

9:00 Youth Orchestra auditionees arrive and enter Suite 300.
9:30 Auditions begin

Chamber Orchestra Auditions

10:30 Youth Orchestra auditionees arrive and enter Suite 300.
11am Auditions begin

Audition results will be made available on Monday, August 26th at 10am. Results will be both sent out in a group text and group email.

Audition Registration

All students who are not taking private lessons from TCM must fill out a registration form at the following link. A **\$15 registration fee** is also due and should be paid via Venmo to @temeculaconservatory or paid via Zelle to the number 951-710-4330. Registration paperwork and payment are due as of midnight, Friday, August 23rd.

Audition Registration Link
(Please copy and place in your browser window)

https://temeculaconservatory.na4.documents.adobe.com/public/esignWidget?wid=CBFCIBAA3AAABLbIqZhC4X6IM-2yg_R4pg0rD9baafow-ZKchred0_0RCmfg8QoBTydBI0IP1tFpjYQ7D0-A*

Frequently Asked Questions (FAQ)

HOW & WHEN DO TCM AUDITIONS TAKE PLACE?

Fall TCM Orchestra Auditions will take place from 8am-1pm on Saturday, August 24th. Students must submit the PDF registration via the PDF Link by the deadline of Friday, August 24th, Midnight.

HOW MUCH DO AUDITIONS COST?

For students not taking private instruction at TCM there will be a \$15 audition fee required. Please Venmo your fees to @temeculaconservatory with the name of your student in the notes or Zelle it to the number 951-710-4330.

SHOULD I MEMORIZE MY MUSIC?

Memorization is not required. If you would like to memorize your music you are welcome to do so; however, it does not affect your audition score. If you do not bring music it will be provided for you. You will also need music in order to play the parts as requested by the judges who will be giving out measure number to play.

HOW WILL MY AUDITION BE JUDGED?

All auditions are blind. Your audition will be judged by two judges on the other side of a black curtain dividing the room. The adjudication sheets our judges will use are part of this package and can be found after the FAQ section.

WHAT CRITERIA WILL THE JUDGES BE USING TO JUDGE MY PERFORMANCE?

The judges will score with the following criteria:

Tone Quality (10% of score)

Dynamics/Interpretation (10% of score)

Intonation Accuracy (40% of score)

Rhythm Accuracy (40% of score)

Tone Quality and Interpretation (Total Points 20)

The scores for Tone Quality and Dynamic/Interpretation consist of two subjective 10 point scores. Both judges scores for these two criteria will be averaged together. For example one judge might give a score of 8 for Tone Quality and the second judge might give a score of 7 for Tone Quality. Averaged together this score would average out to be 7.5/10. The same will done for the Dynamics/Interpretation score. The maximum score that can be given when combining both scores is 20 points.

Intonation Accuracy & Rhythm Accuracy

The score for Intonation Accuracy will be assigned to one of the two judges and the score for thytm accuracy will be assigned to the second of the two judges. For example Intonation Accuracy might be scored by judged #1 and Rhythm accuracy would then be scored by judge #2. These two criteria, Intonation Accuracy and Rhythm Accuracy will be scored by each assigned judge using a pencil to tally down each time they hear an inaccuracy. This usually ends up being less than the actual number of inaccuracies as the judge cannot actually work out the exact number of innacuracies. They will do their best to be as exact on their count as possible.

The final scores for Tone Quality and Intonation Inaccuracy will each be determined by taking the total number of inaccuracies and finding on the Adjudication Point Scale Sheet the total points taken off out of 40. Both criteria, Intonation Accuracy and Rhythm Accuracy are judged using a scaled down point system on the Adjudication Point Scale Chart. The first ten inaccuracy's are worth 1.6 points each. The second ten inaccuracies are worth 1.2 each. The third ten inaccuracies are worth .8 each. The fourth ten inaccuracies are worth .4 each.

The final score will be determined by taking all four scores and adding them together. The score will equal somewhere between 0-100.

FAQ-Page 2

WHAT SCORE IS REQUIRED TO BE ACCEPTED INTO JUNIOR ORCHESTRA?

All students auditioning for Junior Orchestra will be accepted. Scores determine the order in which students will be seated and determine the section leaders and concert master. This seating chart remains the same throughout the semester and will be where the students sit for the concert in December.

WHAT SCORE IS REQUIRED TO BE ACCEPTED INTO YOUTH ORCHESTRA?

A student must obtain a curved score of 80/100 or above in order to be accepted into the Youth Orchestra. All scores will be curved up based upon the top scoring student. For example if the top scored student receives a 93/100 all other scores will then be raised by 7 points.

WHAT SCORE IS REQUIRED TO BE ACCEPTED INTO CHAMBER ORCHESTRA?

A student must obtain a curved score of 80/100 or above in order to be accepted into the Youth Orchestra. All scores will be curved up based upon the top scoring student. For example if the top scored student receives a 93/100 all other scores will then be raised by 7 points.

WHAT IF I AUDITION FOR A HIGHER ORCHESTRA BUT DON'T MAKE THE REQUIRED SCORE TO BE ACCEPTED?

All students auditioning for Youth Orchestra who do not receive the required score will be placed in the Junior Orchestra. All students auditioning for a higher orchestra must also audition for the orchestra they are currently in. If they do not make the higher level orchestra their score in their current orchestra will determine where they sit in their section.

HOW WILL THE ORCHESTRAS BE ORGANIZED AFTER ALL THE AUDITION SCORES ARE IN?

Students in each orchestra will be seated based on their score with the top score receiving a principal chair, the next best score being seated next, etc. For example the top score of the violins will be the Concert Master, the top score of the cellos will be the Principal Cello and the top bass score will be the Principal Bass. All the violins will be split into three sections based upon the total number of auditionees. For example, if there are 12 violins auditioning the First violins will most likely have 4 violins, the Second Violins will then have 4 violins and the Third Violins will have four violins. This means as the scores are listed the top score would become the Concert Master, the fifth best score would become Principal 2nd and the 9th best audition score would become Principal 3rd. If the total number of violins are odd then the first violins will receive the extra violin.

WHAT SHOULD I WEAR TO AUDITIONS?

Students should wear comfortable clothing to perform in. Since auditions are "blind," you do not need to dress up.

WHEN WILL I FIND OUT THE RESULT OF MY AUDITION?

All audition results will be announced via text message and email by 10am the Monday after the audition. Be sure to enter your email address correctly into the registration PDF and make sure that your email account will accept mail from brad@temeculaconservatory.com (not blocked by your spam folder).

FAQ-Page 3

WHAT ARE THE REQUIREMENTS FOR PARTICIPATION IN TCM ORCHESTRAS?

To be a member of a TCM Orchestra, a student need only audition. Students must currently be taking private lessons from a qualified teacher to compliment their music education as this will help them succeed at a much faster rate. Students will provide the contact information of their teacher on the registration form. TCM will contact all private teachers before the auditions to confirm a student is currently taking private lessons.

WHAT IS THE COST TO PARTICIPATE IN A TCM ORCHESTRA?

Tuition per semester for students who played in the December concert is \$340. Private lesson students of TCM may break up these payments into five monthly installments. Students not taking private lessons at TCM will be required to pay the orchestra fee in one installment. All payments must be paid via credit card, Venmo or Zelle. **There will be no refunds for orchestra if a student decides to withdraw Mid-Semester.**

WHICH ORCHESTRA SHOULD I AUDITION FOR?

Students who are playing at a Suzuki book level should audition for the TCM Junior Orchestra. Students who are playing at a Suzuki book 2-4 level should audition for the TCM Youth Orchestra. Students who are playing at a Suzuki book 5 level or above should audition for the TCM Chamber Orchestra.

WHO WILL THE JUDGES BE WHO ARE JUDGING?

Judges will consist of music teachers from TCM.

WHAT WILL THE JUDGES SAY WHEN I WALK IN TO THE AUDITION ROOM?

Here is an example of what you might hear the judges say as the door is closed on the audition room and you begin your audition.

"Hello student number 5, we will first be starting with the scale. Please play this scale at the following speed." (The judge will play the speed of the scale with a metronome and give a verbal example of the speed of the scale such as "tah, tah, tah, tah".

Once the student finishes the judge may say "Thank you student number 5. Next we will have you play excerpt number 1. Here is the speed of this excerpt". The judge will play a metronome at the required speed and give a verbal example of the first 1 or 2 measures of the excerpt.

Once the audition is over the judge will say something like "Thank you student number 5!". At this point the audition staff will open the door and the student will leave the room without speaking. **If a student makes any sound or noise with their voice they will be disqualified from the audition.**

All students auditioning for a particular orchestra will hear the judges say exactly the same thing as the judges will have a script they will be reading to make sure every student receives the exact same experience.

WHAT HAPPENS WHEN I HAVE A QUESTION OR PROBLEM DURING THE AUDITION?

If you are confused or need help in any way during the audition you will step out of the room, close the door and speak with the audition staff who will be standing outside the audition room. The audition staff will then speak with the judges on the issue or question the auditioning student may have.

FAQ-Page 4

WHAT WILL HAPPEN IF I PLAY THE SCALE AND ALL THE EXCERPTS SLOWER THAN THE REQUIRED TEMPO?

Students playing the required scale and excerpts slower than the required tempo or speed will receive an automatic 5 points off their overall score of 0-100 points.

WILL WE HAVE A CHANCE TO BE GIVEN A WALK THROUGH EXAMPLE OF HOW TO DO AN AUDITION?

Yes. Before each audition begins students who would like to will be given a walkthrough of the audition process. They will be toured through the studio through each step of the audition as it should play out until the completion of an audition. Those giving the tour will then answer any questions the students might have.

MAY WE AS PARENTS WAIT IN THE ORCHESTRA ROOM(Suite 300)?

Yes. Parents may wait in the orchestra room (Suite 300) as the auditions are going on.

MAY WE AS PARENTS WAIT IN THE STUDIO WAITING ROOM (Suite 102)?

No. All parents must wait in the orchestra room as the audition process is going on. Parents who enter and stay in the waiting room to listen to their student or other student's auditions will be asked to leave and their student will be disqualified from auditions and will not be allowed to participate in TCM orchestras going forward.



Temecula Conservatory Auditions Adjudication Form

Student #

Scoring and Comments

____ Tone Quality resonance, control, clarity, focus, consistency, warmth
(Subjective)

10%
(1-10)

Intonation accuracy to printed pitches
(Objective)

Inaccurate Pitches

Total #

40%
Tallies

Rhythm accuracy of note and rest values, duration, pulse, steadiness, correctness of meters.
(Objective)

Inaccurate Rhythms

Total #

40%
Tallies

____ Dynamics, phrasing, tempo, emotional involvement
(Subjective)

10%
(1-10)

<div style="border: 1px solid black; width: 30px; height: 30px; margin: 0 auto;"></div>	Division I (Superior) = 90-100 Division II (Excellent) = 80-89.9 Division III (Good) = 60-79.9 Division IV (Fair) = 40-59.9 Division V (Poor) = 0-39.9	A superior performance - outstanding in nearly every detail An excellent performance — minor defects A good performance -lacking finesse and/or interpretation A fair performance — basic weaknesses A poor performance — unsatisfactory
Final Score		

Intonation & Rhythm Scoresheet

Total # of Inaccuracies	Points Per Inaccuracy	Final Score Out of 40
1	1.6	38.4
2	1.6	36.8
3	1.6	35.2
4	1.6	33.6
5	1.6	32
6	1.6	30.4
7	1.6	28.8
8	1.6	27.2
9	1.6	25.6
10	1.6	24
11	1.2	22.8
12	1.2	21.6
13	1.2	20.4
14	1.2	19.2
15	1.2	18
16	1.2	16.8
17	1.2	15.6
18	1.2	14.4
19	1.2	13.2
20	1.2	12
21	0.8	11.2
22	0.8	10.4
23	0.8	9.6
24	0.8	8.8
25	0.8	8
26	0.8	7.2
27	0.8	6.4
28	0.8	5.6
29	0.8	4.8
30	0.8	4
31	0.4	3.6
32	0.4	3.2
33	0.4	2.8
34	0.4	2.4
35	0.4	2
36	0.4	1.6
37	0.4	1.2
38	0.4	0.8
39	0.4	0.4
40	0.4	0

